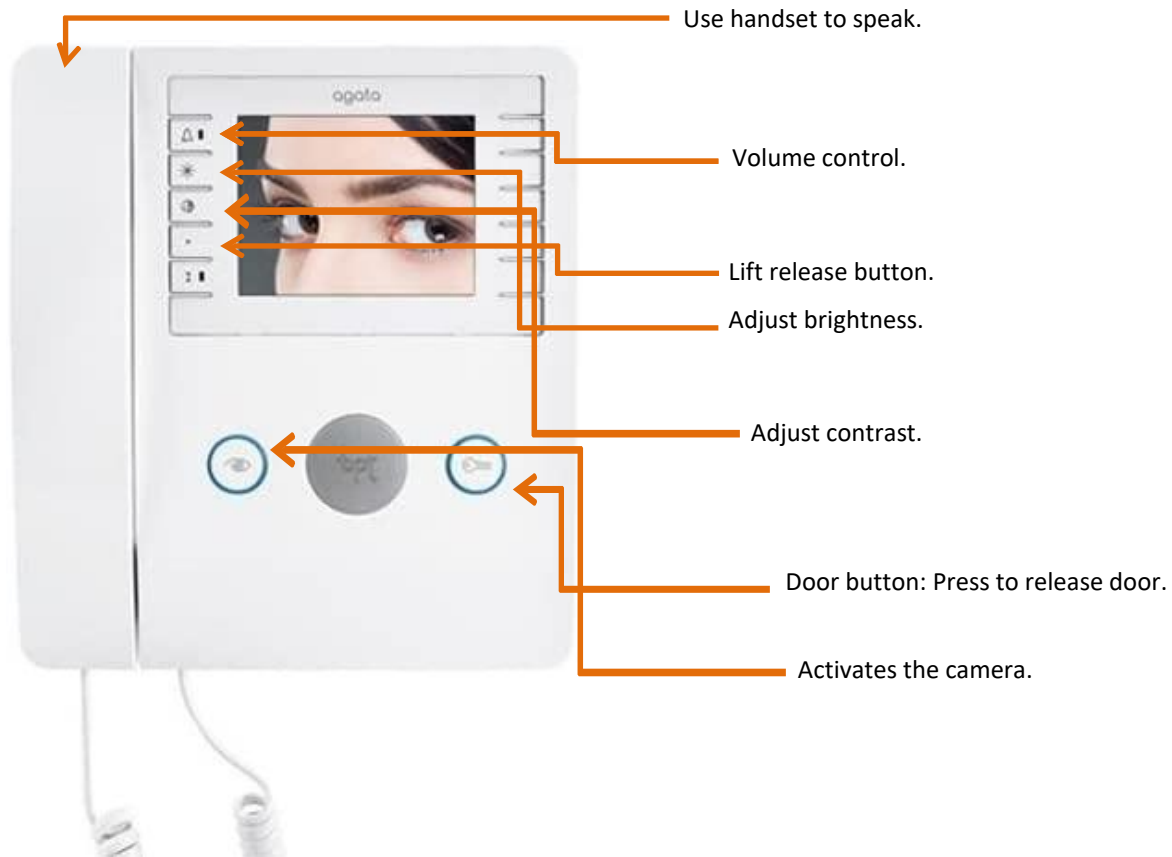


# RINA APARTMENTS

## Using your intercom monitor

### When a visitor calls:



### Problems with your monitor:

- |  |   |
|--|---|
| 1. No audio to or from visitor door station:       | There is no volume control. Try again before reporting a fault. |
| 2. No video from visitor door station:             | Try again before reporting a fault.                             |
| 3. Cannot release door or lift for visitor:        | Try again before reporting a fault.                             |
| 4. Monitor beeps constantly:                       | Report this fault.  |
| 5. Monitor does not respond – audio/video/release: | Report this fault.  |

**For service, please contact your building manager**

*Do not wash or paint. Clean with a damp cloth only.*